

Build intelligence into your power plants



MONITOR

Benefit from an industrial view of your assets' actual performances from a single portal.

MAINTAIN

Reduce your power station down time thanks to the built-in maintenance module and 24*7 alert system.

OPTIMISE

Maximise your energy production using configured indicators customised to your user profile.

CONTROL

Fully control your technical and financial data, your assets and your users.

A specific user profile-related view

PVSOFT allows you to have an industrial view of energy production from one or more of your power stations at a glance.

INVESTORS

MONITOR THE ACTUAL PERFORMANCES OF YOUR PRODUCTION INSTALLATION PORTFOLIO

OPERATORS

CONTROL AND MAINTAIN YOUR SITES USING A TECHNICAL TOOL COMPATIBLE WITH MOST EQUIPMENT AVAILABLE ON THE MARKET

OWNERS

MANAGE YOUR SITE'S PERFORMANCE AND BUILD IT INTO YOUR ENERGY POLICY

2500 + SITES
MANAGED BY
PVSOFT

THE PVSOFT SOFTWARE CAN BE INSTALLED FOR ALL TYPES OF POWER STATION: INSTALLED AT GROUND LEVEL OR ON ROOFS, CONNECTED TO THE GRID OR STAND-ALONE

Using PVSOFT, your energy is under control

Remote performance analysis

The software is a power station performance management tool, as well as a tool for industrial asset management. It makes it possible to reduce operating and maintenance costs and to maximise your energy production. PVSOFT focusses on the monitoring of one or more power stations anywhere in the world, making it possible to indicate and analyse actual performance. The software solution runs like a cloud-based web application, requiring no installs. It supports most communications gateways. PVSOFT offers a complete reporting solution and a built-in maintenance module which can be used to analyse power station maintenance and refurbishment costs. These features add cost effectiveness to assets and the integration of production into an energy management system.

On 3 secondary schools in Guyana, 2,7 Mwp, PVSOFT allows to have the detection of production defects

Constraint-free information sharing

All users connect to the same single portal and can freely customise their data to their needs. Using your corporate account, you can share one or more of your sites with a partner external to the company. This type of configuration allows unrestricted collaboration. PVSOFT will become a true decision-making tool for your teams managing production and the maintenance of your assets.

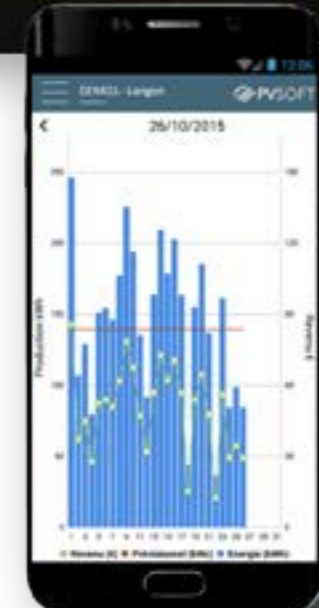
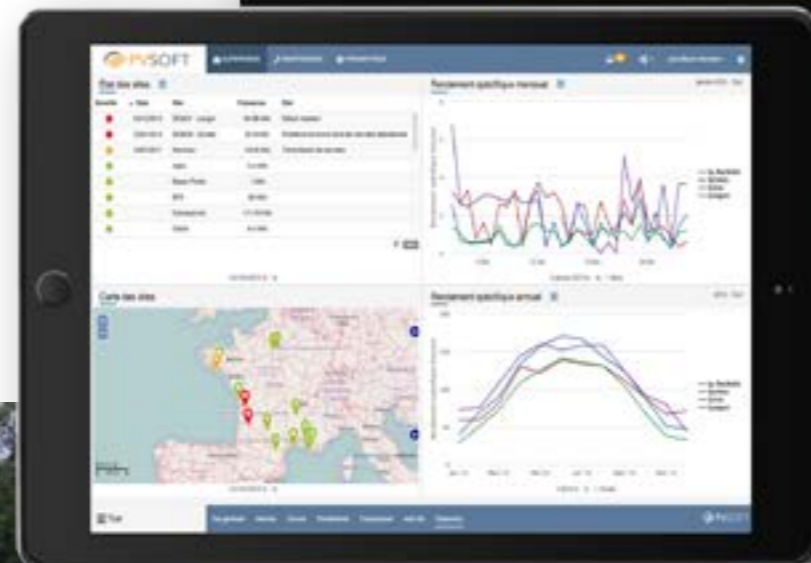
A Multi-site, multi manufacturer solution

PVSOFT processes your power station data using a communications gateway (datalogger) installed on site. This system sends a regular flow of data to our server, which analyse, aggregate and archive it. This data is available to you in several forms :

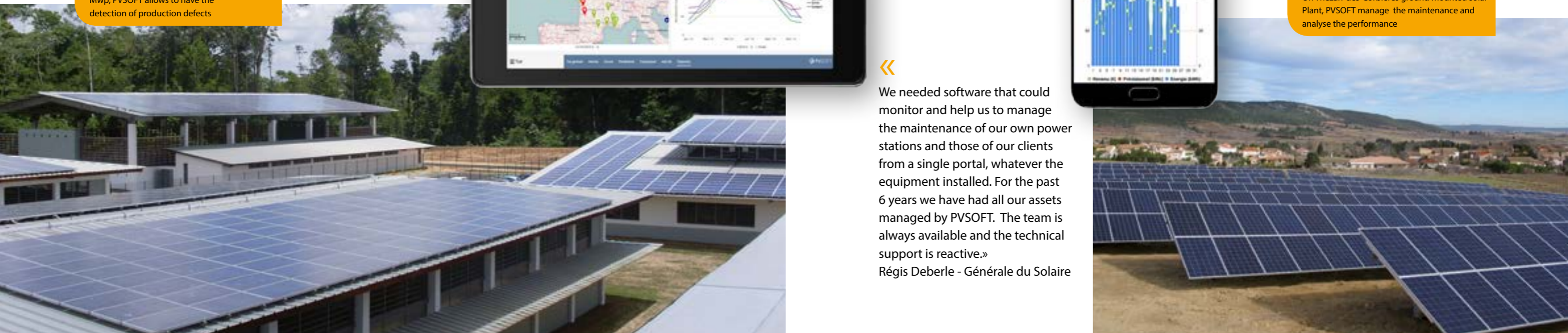
- > Customisable dashboards made up of widgets (charts, tables, etc.) that you can assemble depending on your needs
- > Customisable alerts by email, text message or notifications
- > Automatically generated and sent reports

In order to take into account the heterogeneity of your assets, PVSOFT is compatible with the majority of equipment : inverters, meters, weather sensors and dataloggers from different manufacturers (SMA, Huawei, Siemens, Schneider, Socomec, Power-One, Kaco, Danfoss, Solar-

On Thézan-des-Corbières ground mounted solar Plant, PVSOFT manage the maintenance and analyse the performance



« We needed software that could monitor and help us to manage the maintenance of our own power stations and those of our clients from a single portal, whatever the equipment installed. For the past 6 years we have had all our assets managed by PVSOFT. The team is always available and the technical support is reactive.»
Régis Deberle - Générale du Solaire





on 19 farm buildings, 1,9 MWp, PVSOFT manage the contractual guarantees provided by the manufacturer

An effective M2M communication PACK

We offer our clients a communication pack that includes a WebdynSUN gateway and an M2M subscription.

This gateway is compatible with most inverters and has a high number of inputs/outputs. It can monitor TIC meters, pulse meters, sensors (temperature, radiation, etc.), fire alarms, intrusion detectors, lightning arresters and MODBUS equipment. The M2M subscription is multi-operator; it selects the best network for your coverage. Optionally, the gateway can be configured to connect to your PVSOFT account.
















ABOUT

Founded in 2010, S4E is a software developer specialised in energy information systems.

Currently PVSOFT manages over 2500 installations allowing them to be included in a more global energy policy. This solution is a true power station performance management tool, as well as a tool for your industrial asset management.

In 2015, PVSOFT by S4E became a subsidiary of Apex Energies, the independent energy producer pioneering the photovoltaic industry for 25 years.

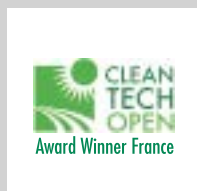
Features

- 
Full WEB
 Zero install, 24*7, reduced TCO
- 
Security
 Secure redundant server
- 
Data
 Automatic data backup of data available on-line
- 
Monitor equipment
 Inverters, strings, meters, panels or digital I/O
- 
Maintenance
 Create and monitor on-site work carried out internally or subcontracted (with accounting monitoring)
- 
Communications gateways
 Compatible with all commercially available gateways (Webdyn, SMA, SolarLog, etc.)
- 
M2M subscription
 We can supply and manage your multi-operator data subscriptions (automatic switching depending on coverage)
- 
Multi-Site, Multi-manufacturer
 All your sites on a single portal
- 
Dashboards
 Customise your dashboards to your user profile
- 
Charts
 Use an extensive library of available pre-defined charts
- 
Reports
 Get regular customised reports configured to your needs
- 
Alerts
 Customise your alerts and receive incident alerts by email, text message or on your mobile application
- 
Multi-profile
 Share data with your clients or partners (multi-profiles available)
- 
Mobile
 Access the portal from your tablet or smartphone. Use the Android application to monitor incidents and manage interventions.
- 
Technical support
 Technical support available by email or phone

GROUP SUBSIDIARY



AWARDS



SUPPORTED BY



CONTACT US

02 30 96 65 98
 contact@pvsoft.com
 www.pvsoft.com

BâtimentOcéanDéveloppement
 9rueHonoréd'Estienne d'Orves
 56100 Lorient

